

Natural changes of population 1961 – 2022

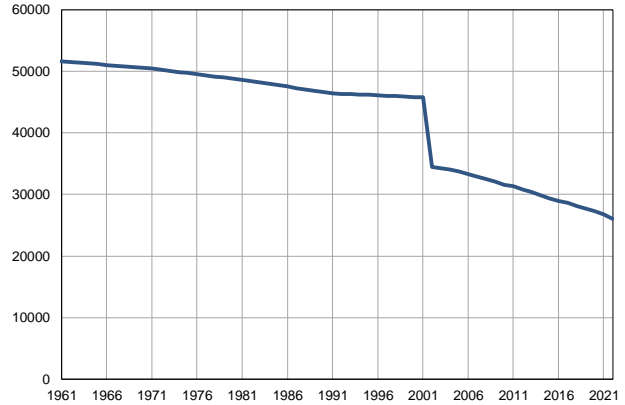
Profile
July 2023

Petrovac na Mlavi

	1961	2022
Population size	51613	26009
Livebirths, Number	649	180
Deaths, Number	602	575
Natural increase, Number	47	-395
Infants deaths, Number	46	0
Livebirths, per 1,000 population	13	7
Deaths, per 1,000 population	12	22
Natural increase, per 1,000 population	1	-15
Infants deaths, per 1,000 livebirths	71	0

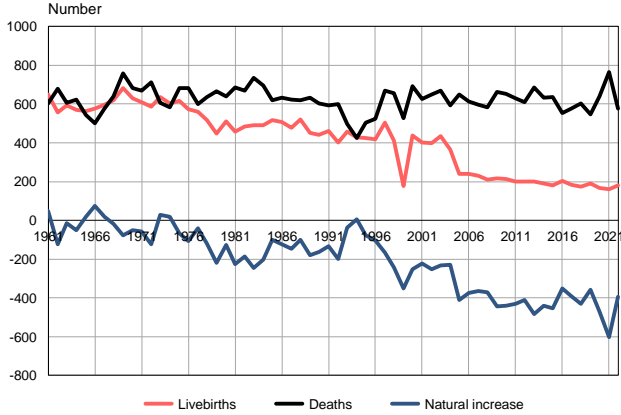
Source: Vital Statistics, SORS

Population size, 1961–2022



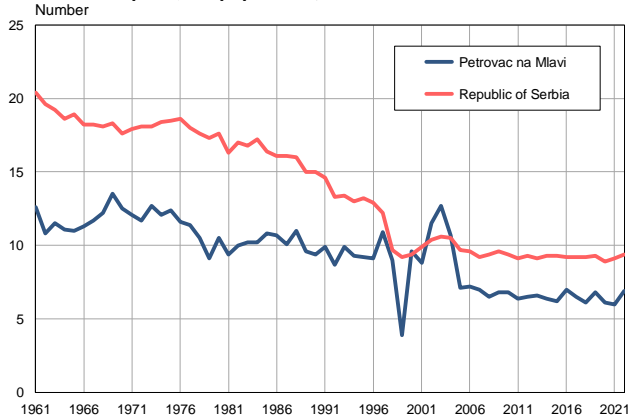
Source: Vital Statistics, SORS

Livebirths, deaths and natural increase, 1961–2022



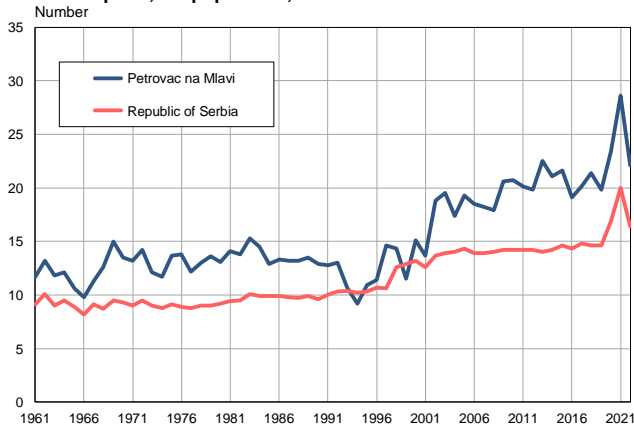
Source: Vital Statistics, SORS

Livebirths per 1,000 population, 1961–2022



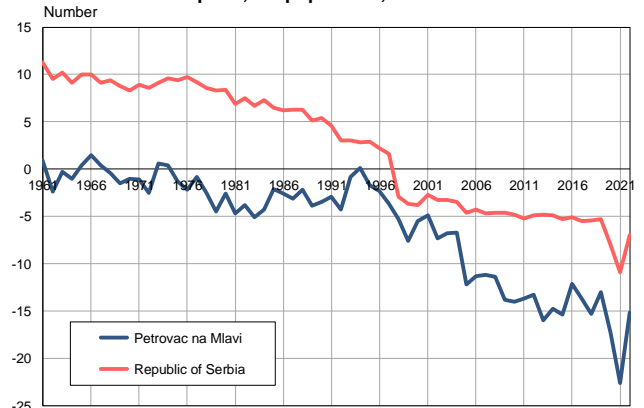
Source: Vital Statistics, SORS

Deaths per 1,000 population, 1961–2022



Source: Vital Statistics, SORS

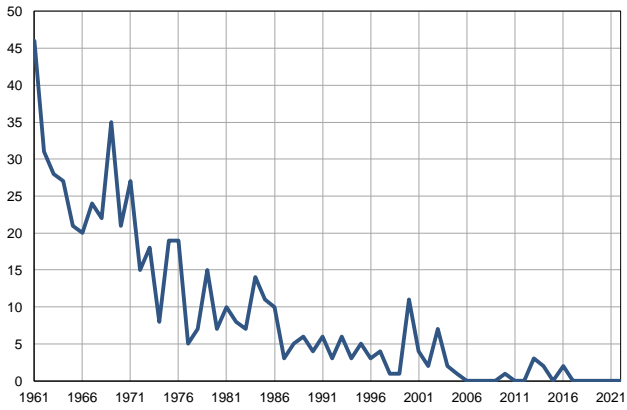
Natural increase per 1,000 population, 1961–2022



Source: Vital Statistics, SORS

Infants deaths, 1961–2022

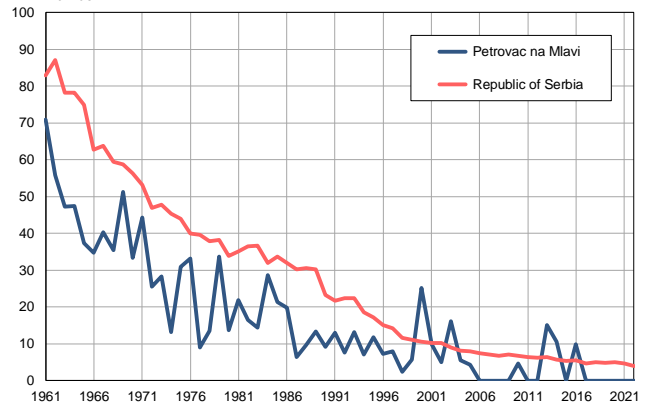
Number



Source: Vital Statistics, SORS

Infants deaths per 1,000 livebirths, 1961–2022

Number



Source: Vital Statistics, SORS

Table. Natural changes of population, Petrovac na Mlavi

Year	Number of population	Livebirths	Deaths	Natural increase	Infants deaths	per 1000 population			Infant deaths per 1000 livebirths
						Livebirths	Deaths	Natural increase	
1961	51613	649	602	47	46	12.6	11.7	0.9	70.9
1962	51495	557	679	-122	31	10.8	13.2	-2.4	55.7
1963	51377	592	605	-13	28	11.5	11.8	-0.3	47.3
1964	51259	570	622	-52	27	11.1	12.1	-1.0	47.4
1965	51141	563	543	20	21	11.0	10.6	0.4	37.3
1966	51023	577	501	76	20	11.3	9.8	1.5	34.7
1967	50905	595	575	20	24	11.7	11.3	0.4	40.3
1968	50787	620	638	-18	22	12.2	12.6	-0.4	35.5
1969	50669	683	759	-76	35	13.5	15.0	-1.5	51.2
1970	50551	631	683	-52	21	12.5	13.5	-1.0	33.3
1971	50433	610	668	-58	27	12.1	13.2	-1.1	44.3
1972	50251	588	712	-124	15	11.7	14.2	-2.5	25.5
1973	50068	635	607	28	18	12.7	12.1	0.6	28.3
1974	49886	604	584	20	8	12.1	11.7	0.4	13.2
1975	49703	615	683	-68	19	12.4	13.7	-1.3	30.9
1976	49521	573	681	-108	19	11.6	13.8	-2.2	33.2
1977	49338	561	601	-40	5	11.4	12.2	-0.8	8.9
1978	49156	518	637	-119	7	10.5	13.0	-2.5	13.5
1979	48974	447	667	-220	15	9.1	13.6	-4.5	33.6
1980	48791	511	639	-128	7	10.5	13.1	-2.6	13.7
1981	48608	458	684	-226	10	9.4	14.1	-4.7	21.8
1982	48389	484	670	-186	8	10.0	13.8	-3.8	16.5
1983	48169	490	736	-246	7	10.2	15.3	-5.1	14.3
1984	47950	490	694	-204	14	10.2	14.5	-4.3	28.6
1985	47730	517	618	-101	11	10.8	12.9	-2.1	21.3
1986	47511	507	632	-125	10	10.7	13.3	-2.6	19.7
1987	47292	476	623	-147	3	10.1	13.2	-3.1	6.3
1988	47072	520	621	-101	5	11.0	13.2	-2.2	9.6
1989	46853	452	633	-181	6	9.6	13.5	-3.9	13.3
1990	46633	440	602	-162	4	9.4	12.9	-3.5	9.1
1991	46414	460	592	-132	6	9.9	12.8	-2.9	13.0
1992	46350	401	601	-200	3	8.7	13.0	-4.3	7.5
1993	46285	458	496	-38	6	9.9	10.7	-0.8	13.1
1994	46221	429	424	5	3	9.3	9.2	0.1	7.0
1995	46157	425	504	-79	5	9.2	10.9	-1.7	11.8
1996	46092	419	524	-105	3	9.1	11.4	-2.3	7.2
1997	46028	503	670	-167	4	10.9	14.6	-3.7	8.0
1998	45963	412	656	-244	1	9.0	14.3	-5.3	2.4
1999	45899	177	527	-350	1	3.9	11.5	-7.6	5.6
2000	45835	439	692	-253	11	9.6	15.1	-5.5	25.1
2001	45770	403	627	-224	4	8.8	13.7	-4.9	9.9
2002	34487	397	650	-253	2	11.5	18.8	-7.3	5.0
2003	34248	434	668	-234	7	12.7	19.5	-6.8	16.1
2004	34016	365	593	-228	2	10.7	17.4	-6.7	5.5
2005	33687	240	650	-410	1	7.1	19.3	-12.2	4.2

Table. Natural changes of population, Petrovac na Mlavi

Year	Number of population	Livebirths	Deaths	Natural increase	Infants deaths	per 1000 population			Infant deaths per 1000 livebirths
						Livebirths	Deaths	Natural increase	
2006	33265	241	614	-373	0	7.2	18.5	-11.3	0.0
2007	32891	231	597	-366	0	7.0	18.2	-11.2	0.0
2008	32509	211	582	-371	0	6.5	17.9	-11.4	0.0
2009	32051	218	661	-443	0	6.8	20.6	-13.8	0.0
2010	31540	213	654	-441	1	6.8	20.7	-14.0	4.7
2011	31331	199	629	-430	0	6.4	20.1	-13.7	0.0
2012	30853	201	611	-410	0	6.5	19.8	-13.3	0.0
2013	30378	200	685	-485	3	6.6	22.5	-16.0	15.0
2014	29897	191	632	-441	2	6.4	21.1	-14.8	10.5
2015	29409	181	635	-454	0	6.2	21.6	-15.4	0.0
2016	28991	202	553	-351	2	7.0	19.1	-12.1	9.9
2017	28602	185	576	-391	0	6.5	20.1	-13.7	0.0
2018	28157	172	602	-430	0	6.1	21.4	-15.3	0.0
2019	27738	189	548	-359	0	6.8	19.8	-13.0	0.0
2020	27292	167	639	-472	0	6.1	23.4	-17.3	0.0
2021	26717	160	764	-604	0	6.0	28.6	-22.6	0.0
2022	26009	180	575	-395	0	6.9	22.1	-15.2	0.0

Source: Vital Statistics, SORS

Definitions

Population size

Number of population in the respective year. The data on the number of population in 1961, 1971, 1981 and 1991 are census data, while for the inter-census years the number of population was calculated as an average inter-census difference. From 2002 are given the population estimates that were calculated according to the census of population results and the annual statistics of natural mechanical population movements.

Livebirths

Absolute number of live births in the course of a year. Live born child means a child giving vital signs after birth (breathing, i.e. heartbeat), even for the shortest time, regardless the mother's pregnancy duration.

Deaths

Absolute number of deaths in the course of a year. Deceased is a person that whenever after having been born live, shows permanently stopped vital signs.

Natural increase

Natural population increase is the number of live births minus the number of deaths.

Infants deaths

Absolute number of infants deaths in the course of a year. Deceased infant is a child that after having been born live and before aged one year, shows permanently stopped vital signs.

Livebirths, per 1 000 population

Livebirths rate is the ratio of the number of live births and the population size in the respective year. The number of live births is divided by the population size and then multiplied by 1000.

Deaths, per 1 000 population

General mortality rate represents the ratio between the number of deaths and the population size in the respective year. The number of deaths is divided by population size and then multiplied by 1000.

Natural increase, per 1 000 population

Natural population increase rate is the difference between the number of live births and the number of deaths, in relation to the population size in the respective year.

Natural population increase rate = (number of live births - number of deaths) / population size * 1000

Infants deaths, per 1 000 livebirths

Infant mortality rate is the ratio of deceased children under 1 year of age and live births in the respective year. The mortality rate is expressed per 1000 live births.

Infant mortality rate = (number of deceased children under 1 year of age / number of live births) * 1000

Additional info:



Download all database data in Excel format:

[Data](#)



DevInfo profiles:

devinfo.stat.gov.rs/SerbiaProfileLauncher/?lang=en



DevInfo online database:

devinfo.stat.gov.rs/vitalna



For additional information or questions please contact:

devinfo@stat.gov.rs